

Mmilesman **BLAUMAN** NEW BLUE LASER

**THE ULTIMATE TECHNOLOGY TO REMOVE
DERMATOLOGICAL BENIGN LESIONS**



Exclusive Distributor in Lebanon and Middle East

Acolase sarl

📍 Zalka - Amaret Chalhoub - Michel El Murr Street - St. Rita Bldg - 6th Floor

☎ 01/784 624 ☎ 81/644 162

✉ info@acolase.com

🌐 acolase.com

🌐 www.milesman.com


✉ info@milesman.com



ADVANTAGES OVER OTHER ALTERNATIVES

CHARACTERISTICS	MILESMAN BLAUMAN 450nm	ERBIUM or CO ₂ LASER	CRYOGEN	ELECTRIC BISTURI	SHAVING
ANESTHESIA	NO	YES	NO	YES	YES
BLOODING	NO	YES	NO	NO	YES
MINI-LESIONS	YES	YES	NO	NO	NO
IMMEDIATE RESULT	YES	YES	NO	YES	YES
LIMITS DEFINITION	YES	YES	NO	NO	NO
DEPTH DEFINITION	YES	YES	NO	NO	NO
PORTABILITY	YES	NO	YES	YES	YES

WHY DO YOU NEED TO HAVE A MILESMAN BLAUMAN IN YOUR PRACTICE

-  **PAINLESS** - No Anesthesia needed as this laser is not absorbed by H₂O.
-  **VERY SELECTIVE** - 450 nm
Only absorbed by melanin and only oxyhemoglobin
-  **ACCURATE** - All kinds of lesion sizes.
Only one spot that focuses between 0.5 to 3mm
-  **PORTABLE** - 2 Kg
Easily movable between rooms or places.
-  **SINGLE TREATMENT** - High patient satisfaction.
Results in 1 session.
-  **POWERFUL DEVICE** - FAST PROCEDURE
-  **WIDE VARIETY OF TREATMENTS** - Warts, nevus, hyperplasia, keratosis, telangiectasia, angiomas etc ...

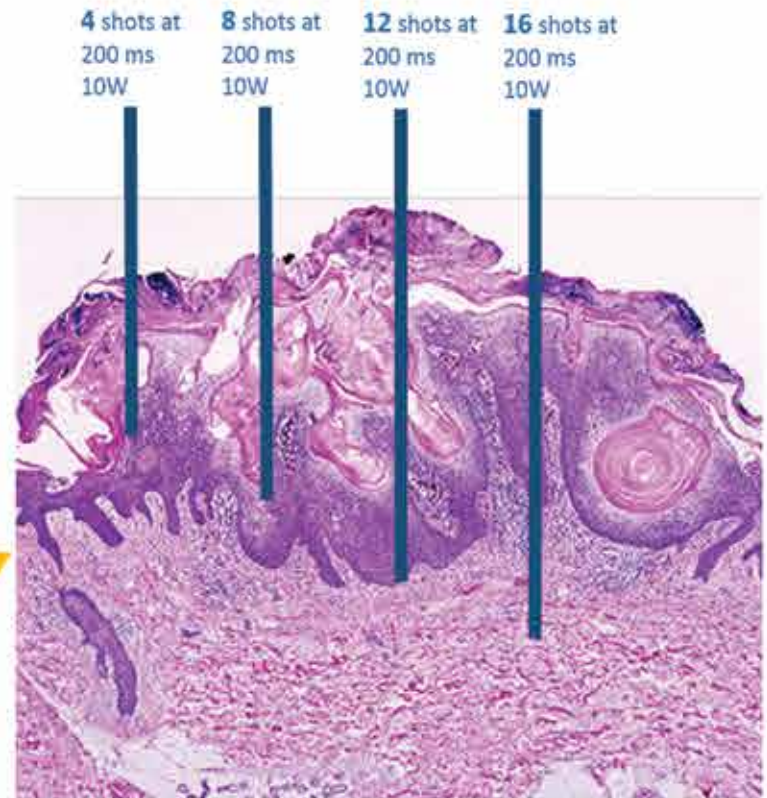
Model	Milesman Blauman
Type	Diode
Maximum power (average pulse power)	20 W
Nominal wavelength	450 nm
Pulse length	5 ms to Continuous
Optical Window	focused between 0.50 and 30 mm
Beam divergence	20°C x 20°C nominal
Recommended power supply	
Voltage, frequency, current	100 – 240 V, 50 – 60 Hz, 12 A
Connection to public main	Single phase grounded outlet
Classification	
Eye risk nominal distance	50 m - 164 ft
Protective glasses	
Optical density at 430 – 470 nm	≥ 5
Physical parameters	
Central unit weight	2.2 Kg - 4.85 Lbs
Central unit size (Diameter)	25 cm - 9.8 in
Operating radius of optical fiber	2 m - 78 in
Environmental conditions	
Temperature, humidity, pressure	15 – 30°C, 0 – 70%, 90 – 110 kPa 60 – 80°F, 0 - 70%, 13 – 16 psi
Classifications	
FDA Classification	Class II Laser
CDRH Classification	Class IV Laser
MDD Classification	II B
Classification according EN 60825-1 norm	4
Operation Classification	INTERMITTENT-CONTINUOUS



PERFECT CONTROL OF PERIMETER AND DEPTH OF THE TISSUE TO BE REMOVED



Seborrheic Keratosis



Seborrheic Keratosis Histology

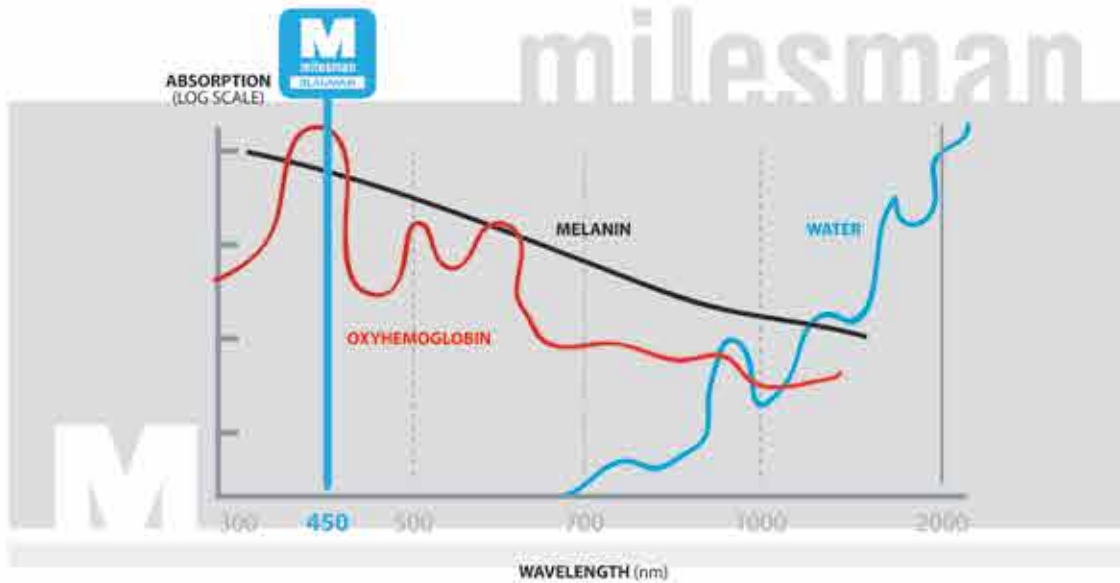
HOW A 450 nm BLUE LASER WORKS?



Benign lesion: It has a high amount of, either melanin or oxyhemoglobin. Any of these 2 components **absorbs light and turns it into heat**. **The lesion vaporizes** and disappears without affecting the near tissues. **The area recuperates perfectly** between 15-30 days.

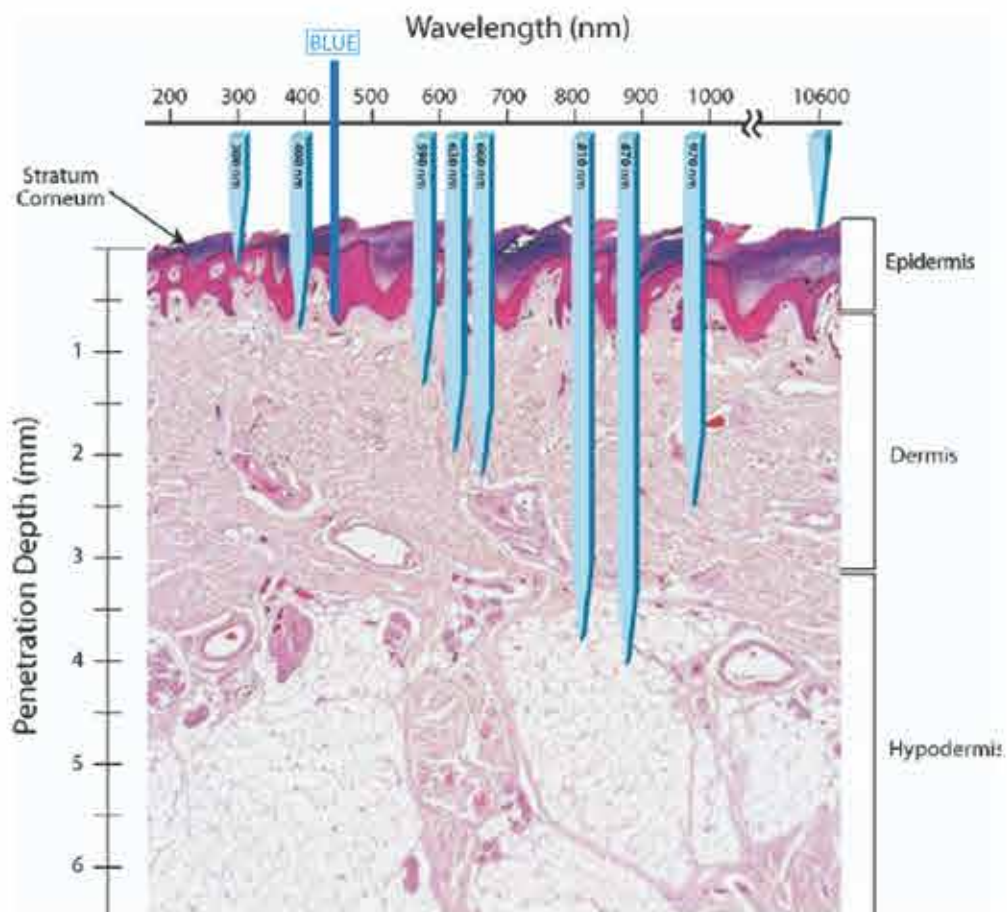
milesman **BLAUMAN**

VERY SELECTIVE LASER



Treated Lesions have a high accumulation of melanin (nevus, keratosis, lentigo etc.) or oxyhemoglobin (telangiectasia, ruby points, angioma, etc.)
Blue laser has the maximum absorption by oxyhemoglobin and melanin chromophores having a 450 nm of wavelength.

ONLY ACTS ON THE SKIN SURFACE



Treated lesions are located on the surface of the skin.
Due to its minimal degree of penetration, Blue Laser enables the control of the depth and perimeter of the tissue to be removed keeping the rest undamaged.

WHAT CAN BE REMOVED WITH MILES MAN BLAUMAN?

SUPERFICIAL VASCULAR LESIONS



Couperosis and Rosacea



Angiomas and Cherry Angiomas

WARTS AND SEBACEOUS LESIONS



Warts



Sebaceous Lesions



Sebaceous hyperplasia



Verrucae

SOLAR LENTIGOS AND SEBORRHEIC KERATOSIS



Seborrheic Keratosis



Solar Lentigos

